

LIFT EYE CLEAT

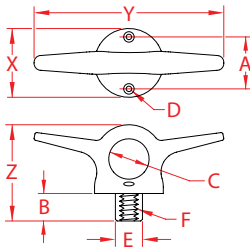
316 STAINLESS STEEL



Import



Precision
Cast



ITEM	A	B	C	D	E	F	X (height)	Y (length)	Z (width)	WT (lb)	PACKAGING TYPE	EACH (qty)	INNER (qty)	CARTON (qty)	UPC
S3250-0000	2.00"	1.00"	1.50"	0.20"	0.98"	5/8" UNC	2.50"	6.86"	3.52"	1.64	POLYBAG	1	1	20	791506056287

NOTE:

USES 2 #10 FASTENERS. THREADS ARE 5/8" - 11 UNC.

ALL DIMENSIONS ARE NOMINAL (+/- 3%) AND ARE SUBJECT TO CHANGE WITHOUT NOTICE.